

PILOT DEVICES

P9M spare keys

Modular metal range

Several different spare keys are available as accessories for the modular metal range of pilot devices. Please make sure to select a spare key that is suitable for your specific selector switch or push button.



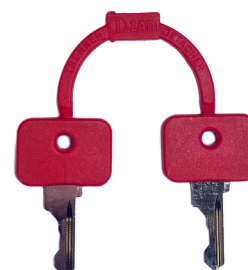
P9ACC01



P9ACC95



P9ACC33



P9ACC37

Ordering details

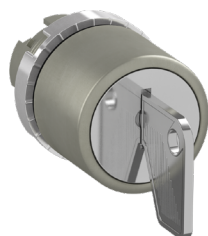
Key code	Color	Suitable for ¹	Type	Order code	Package quantity ²	Weight 1 pcs ³ (kg)
01	Metal	P9MSCxxx01, P9MEC4RN01	P9ACC01	1SFA620920R2001	5	0.014
95	Metal	P9MSCxxx95, P9MEC4RN95	P9ACC95	1SFA620920R2095	5	0.014
33	Yellow	P9MSCD5A33	P9ACC33	1SFA620920R2033	5	0.022
37	Red	P9MSCxxx37, P9MEC4RN37	P9ACC37	1SFA620920R2037	5	0.022

1) xxx means that several different versions exist.

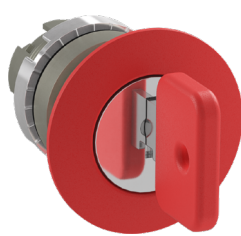
2) Package quantity is 5 pairs (= 10 keys).

3) 1 pcs means 1 pair of keys (= 2 keys), as shown in the images above.

Examples of products the spare keys are suitable for



P9MSCxxx01



P9MEC4RN37

CONTACT
ABB Electrification Sweden AB
SE-721 61 Västerås, Sweden
Tel. +46 (0)21-32 50 00

www.abb.com/low-voltage

Note
We reserve the right to make technical changes or modify the contents of this document without prior notice. With regard to purchase orders, the agreed particulars shall prevail. ABB does not accept any responsibility whatsoever for potential errors or possible lack of information in this document.

We reserve all rights in this document and in the subject matter and illustrations contained therein. Any reproduction, disclosure to third parties or utilization of its contents – in whole or in parts – is forbidden without prior written consent of ABB.
Copyright © 2023 ABB.
All rights reserved.